

## Access: Min Function

In Access, the **Min** function returns the minimum value in a set of numeric values in a select query.

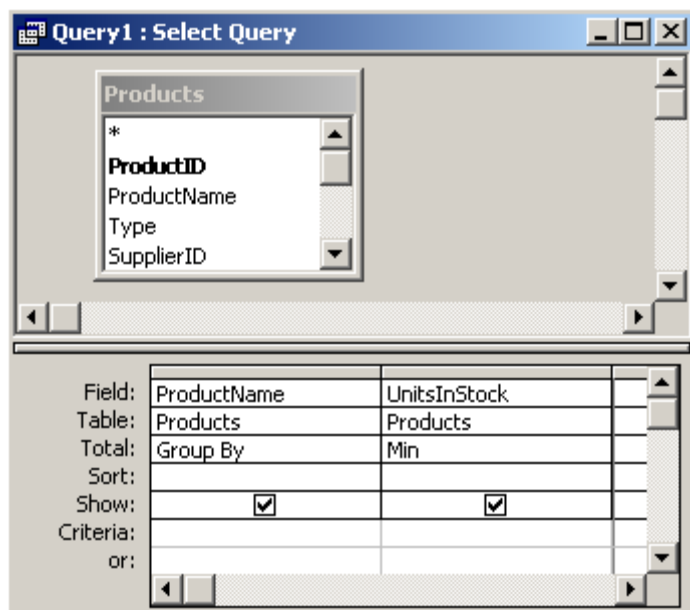
The syntax for the **Min** function is:

Min ( expression )

*expression* is a numeric value. It can be a field or a formula that evaluates to a numeric expression.

## SQL/Queries

You can use the **Min** function in a query by clicking on the Totals button in the toolbar (This is the button with the summation symbol). The **Min** function is used in conjunction with the **Group By** clause.



This query would return the *minimum* UnitsInStock for each ProductName.